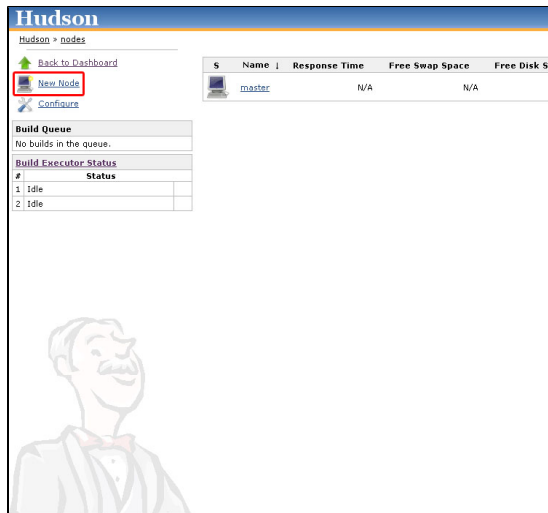


Step by step guide to set up master and slave machines

:Step by step guide to set up master and agent machines on Windows

1. Jenkins -->



2. -->

3. --> OK

Node name

Dumb Slave
 Adds a plain, dumb slave to Jenkins. This is called "dumb" because for example such as when you are adding a physical computer

Copy Existing Node
 Copy from

1. :

- a. (1)
- b. **Remote FS RootFS**
 - i. *Windows slave "C:\Jenkins\"*
 - ii. **TODO:**
- c. **Usage :**
 - i. :
 - ii. :
- d. **Launch Method:**
 - i. *Launch slave agents via Java Web Start Java Web Start Windows (Windows)*
 - ii. **TODO:**
- e. **Availability () -->**
 - i. **TODO:**
- f. **OK**

Name

Description

of executors

Remote FS root

Labels

Usage

Launch method

Availability

Node Properties

Environment variables

Prepare jobs environment

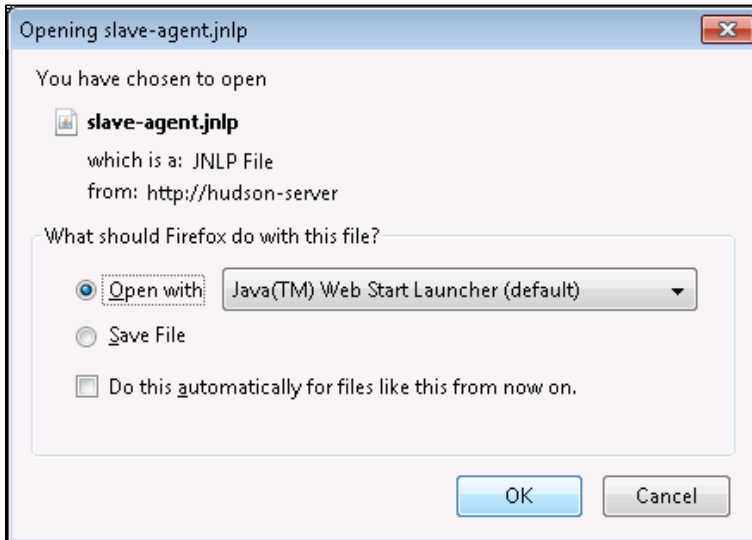
Tool Locations

2. Java Web Start

- a. Jenkins server URL JenkinsURL
- b. Jenkins ->
- c. Launch* jnlJava Web Start



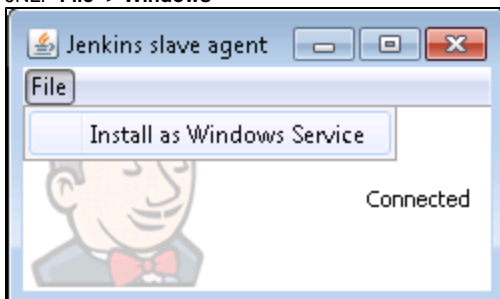
d.



e.

3. Windows

a. JNLP File -> Windows



- b. Windows
- c. Jenkins Slave
- d.
- e. Jenkins(Jenkins /)
- f. JenkinsVM

: Distributed builds